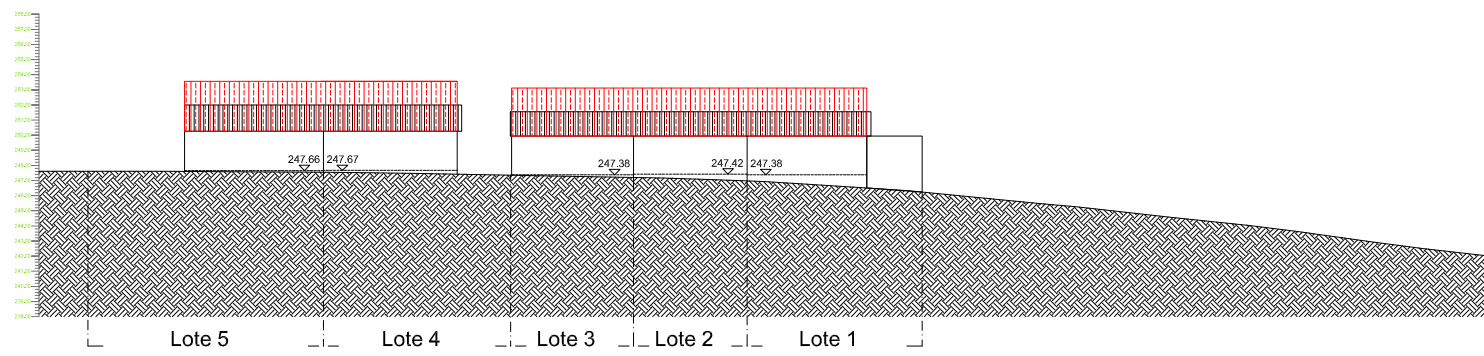
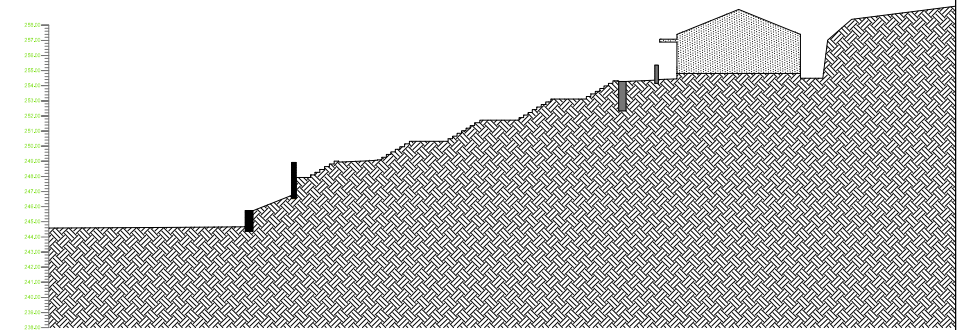


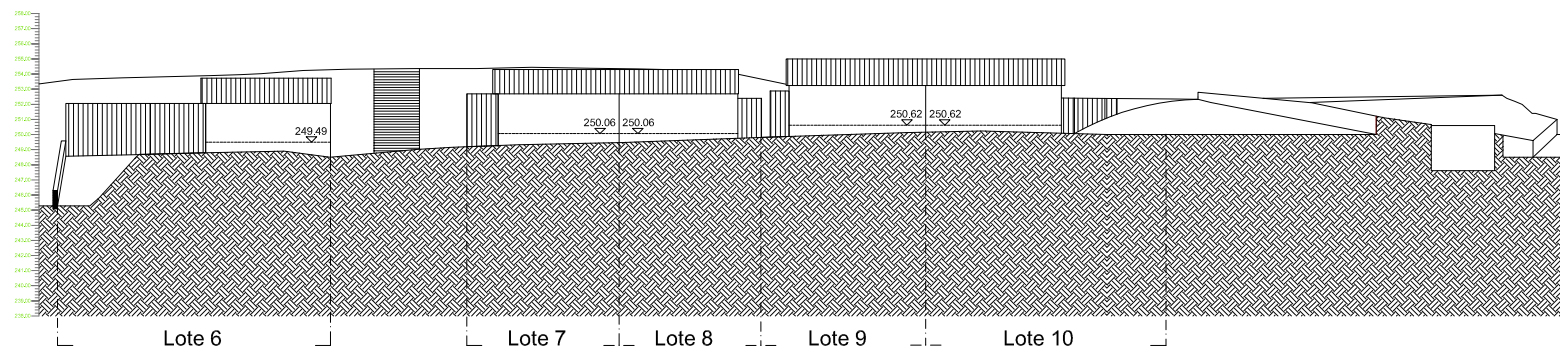
Perfil Longitudinal PL1



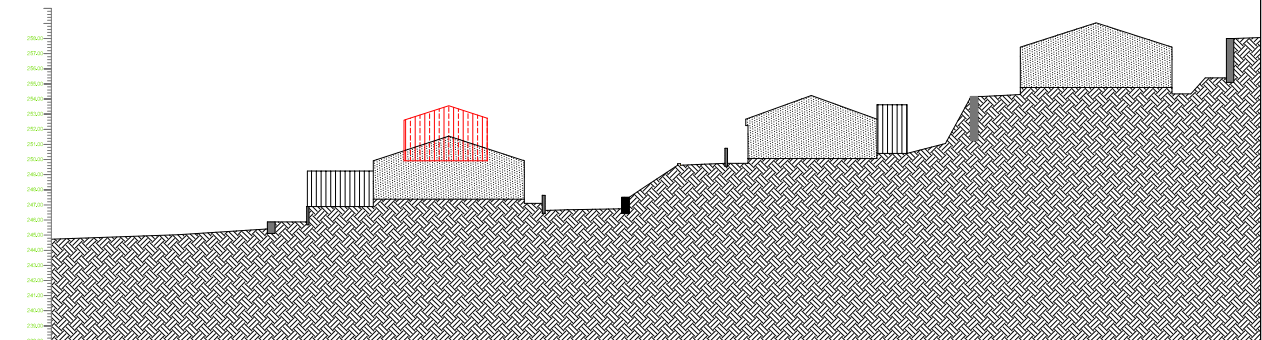
Perfil Transversal PT4



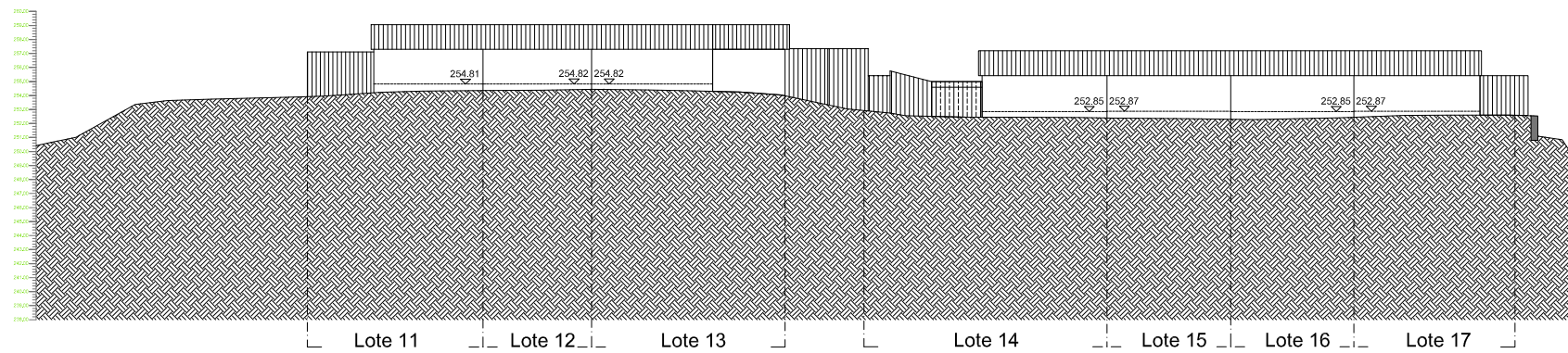
Perfil Longitudinal PL2



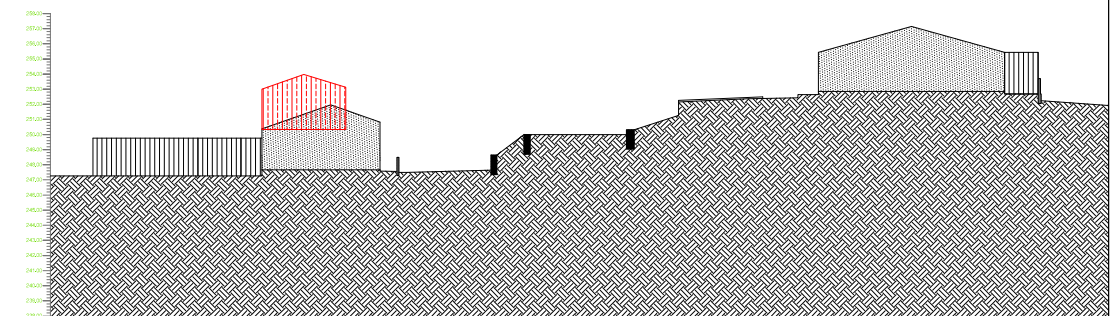
Perfil Transversal PT5



Perfil Longitudinal PL3



Perfil Transversal PT6



Serviço: estudos e projectos



Obra: Loteamento do Bairro da Sra. da Graça

Local: Bairro Sra. da Graça - Vila e Roussas

Designação: Perfis longitudinais e transversais

Coordenou: Albertino Esteves

Desenhou: Rui Ribeiro

Especialidade: Arquitetura

Fase:

Data: Setembro 2023

Escala: 1:500

Norte:

07